

Resorufin ethyl ether *CAS 5725-91-7*

Catalog number: 15023

Unit size: 5 mg

Product Details

Storage Conditions Freeze (<15 °C), Minimize light exposure

Expiration Date 12 months upon receiving

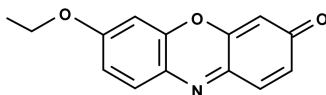
Chemical Properties

Appearance Red solid

Molecular Weight 241.24

Soluble In DMSO

Chemical Structure

**Spectral Properties**

Excitation Wavelength 571 nm

Emission Wavelength 584 nm

Applications

This fluorogenic resorufin ether is widely used for monitoring P450 activities in cell extracts and solutions. Cytochrome P450 oxidase (CYP450) is a large number of evolutionary related oxidative enzymes important in animal, plant, and bacterial physiology. Most cytochromes P450 (CYPs) have about 500 amino acids and a heme group at the active site.