

Cal-500™ AM

 Catalog number: 20412
 Unit size: 10x50 ug

| Component | Storage | Amount |
|-------------|--|----------|
| Cal-500™ AM | Freeze (< -15 °C), Minimize light exposure | 10x50 ug |

OVERVIEW

Calcium measurement is critical for numerous biological investigations. Fluorescent probes that show spectral responses upon binding calcium have enabled researchers to investigate changes in intracellular free calcium concentrations by using fluorescence microscopy, flow cytometry, fluorescence spectroscopy and fluorescence microplate readers. Cal-500™ is an UV-excitable calcium indicator with maximum emission at ~500 nm. It has a Stokes Shift larger than 100 nm. It can also be well excited with the 405 nm violet laser with a moderate calcium affinity of $K_d \sim 303$ nM. In CHO and HEK cells Cal-500™ AM has great cellular calcium response. The excitation spectra of Cal-500 is well separated from those of FITC, Alexa Fluor® 488 and GFP, making it an ideal calcium probe for multiplexing intracellular assays with GFP cell lines, FITC/Alexa Fluor® 488 labeled antibodies or other red fluorescent probes.

KEY PARAMETERS
Fluorescence microscope

| | |
|-------------------|-------------------------|
| Excitation | DAPI |
| Emission | DAPI |
| Recommended plate | Black wall/clear bottom |

Fluorescence microplate reader

| | |
|-----------------------------|---|
| Excitation | 400 |
| Emission | 500 |
| Cutoff | 470 |
| Recommended plate | Black wall/clear bottom |
| Instrument specification(s) | Bottom read mode/Programmable liquid handling |

PREPARATION OF STOCK SOLUTIONS

Unless otherwise noted, all unused stock solutions should be divided into single-use aliquots and stored at -20 °C after preparation. Avoid repeated freeze-thaw cycles.

Cal-500™ AM Stock Solution

Prepare a 2 to 5 mM stock solution of Cal-500™ AM in high-quality, anhydrous DMSO.

PREPARATION OF WORKING SOLUTION
Cal-500™ AM Working Solution

On the day of the experiment, either dissolve Cal-500™ AM in DMSO or thaw an aliquot of the indicator stock solution to room temperature. Prepare a dye working solution of 2 to 20 μ M in a buffer of your choice (e.g., Hanks and Hepes buffer) with 0.04% Pluronic® F-127. For most cell lines, Cal-500™ AM at a final concentration of 4-5 μ M is recommended. The exact concentration of indicators required for cell loading must be determined empirically.

Note The nonionic detergent Pluronic® F-127 is sometimes used to increase the aqueous solubility of Cal-500™ AM. A variety of Pluronic® F-127 solutions can be purchased from AAT Bioquest.

Note If your cells contain organic anion-transporters, probenecid (1-2 mM) may be added to the dye working solution (final in well concentration will be 0.5-1 mM) to reduce leakage of the de-esterified indicators. A variety of ReadUse™ probenecid products, including water-soluble, sodium salt, and stabilized solution, can be purchased from AAT Bioquest.

SAMPLE EXPERIMENTAL PROTOCOL

Following is our recommended protocol for loading AM esters into live cells. This protocol only provides a guideline and should be modified according to your specific needs.

1. Prepare cells in growth medium overnight.
2. On the next day, add 1X Cal-500™ AM working solution into your cell plate.

Note If your compound(s) interfere with the serum, replace the growth medium with fresh HHBS buffer before dye-loading.

3. Incubate the dye-loaded plate in a cell incubator at 37 °C for 30 to 60 minutes.

Note Incubating the dye for longer than 2 hours can improve signal intensities in certain cell lines.

4. Replace the dye working solution with HHBS or buffer of your choice (containing an anion transporter inhibitor, such as 1 mM probenecid, if applicable) to remove any excess probes.
5. Add the stimulant as desired and simultaneously measure fluorescence using either a fluorescence microscope equipped with a DAPI filter set or a fluorescence plate reader containing a programmable liquid handling system such as an FDSS, FLIPR, or FlexStation, at Ex/Em = 400/500 nm cutoff 470 nm.

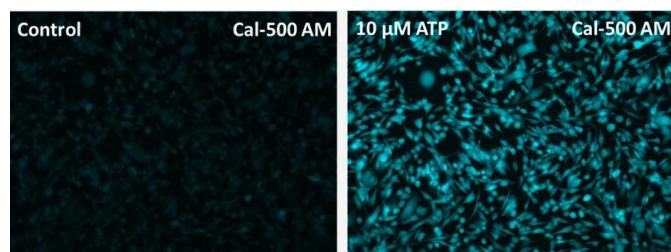
EXAMPLE DATA ANALYSIS AND FIGURES


Figure 1.

Response of endogenous P2Y receptor to ATP in CHO-K1 cells. CHO-K1 cells were seeded overnight at 40,000 cells per 100 μ L per well in a 96-well black wall/clear bottom costar plate. 100 μ L of Cal-500 AM in HHBS with probenecid were added into the wells, and the cells were incubated at 37 °C for 60 min. The dye loading medium were replaced with 200 μ L HHBS. Images were taken before and after the addition of 50 μ L of 10 μ M ATP via a fluorescence microscope (Keyence) using 405 nm and 465 nm long pass filters.

DISCLAIMER

AAT Bioquest provides high-quality reagents and materials for research use only. For proper handling of potentially hazardous chemicals, please consult the Safety Data Sheet (SDS) provided for the product. Chemical analysis and/or reverse engineering of any kit or its components is strictly prohibited without written permission from AAT Bioquest. Please call 408-733-1055 or email info@aatbio.com if you have any questions.

