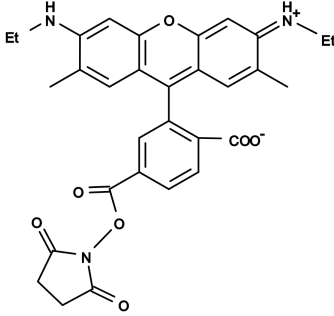
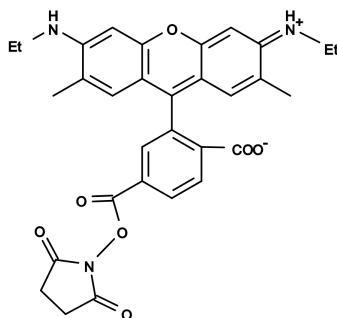


6-CR6G, SE [6-Carboxyrhodamine 6G, succinimidyl ester] *Single isomer*Catalog number: 342, 346
Unit size: 1 mg, 5 mg**Product Details**

Storage Conditions	Freeze ($-15\text{ }^{\circ}\text{C}$), Minimize light exposure
Expiration Date	12 months upon receiving

Chemical Properties

Appearance	Red solid
Molecular Weight	555.59
Soluble In	DMSO
Chemical Structure	

**Spectral Properties**

Excitation Wavelength	522 nm
Emission Wavelength	546 nm

Applications

6-CR6G, SE is amine-reactive derivative of 6-CR6G. It is preferred for some complicated biological applications where reproducibility is more critical than material cost since the minor positional difference between 5-CR6G and 6-CR6G might significantly affect some biological properties of the underlying conjugates.