

**TMRE [Tetramethylrhodamine ethyl ester]****\*CAS#: 115532-52-0\***

Catalog number: 22220

Unit size: 25 mg

**Product Details**

Storage Conditions Freeze (&lt;-15 °C), Minimize light exposure

Expiration Date 12 months upon receiving

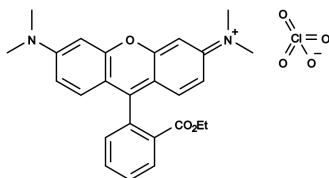
**Chemical Properties**

Appearance Red solid

Molecular Weight 514.95

Soluble In DMSO

Chemical Structure

**Spectral Properties**

Excitation Wavelength 552 nm

Emission Wavelength 574 nm

**Applications**

Positively charged rhodamine dyes (such as rhodamine esters and rosamines) are selectively localized in mitochondria, thus they are widely used for labeling mitochondria of live cells. Like JC-1, TMRM and TMRE are widely used for measuring mitochondrial membrane potential besides their selective mitochondrial staining. These two particular rhodamine esters stain mitochondria orange in fluorescence. Their spectral properties are similar to those of TRITC, making the use of TMRM and TMRE quite convenient. TMRE is slightly more hydrophobic than TMRM.