

**Chrysamine G \*CAS 6472-91-9\***

Catalog number: 23055

Unit size: 5 mg

**Product Details**

---

Storage Conditions Freeze (&lt;math&gt;-15\text{ }^{\circ}\text{C}&lt;/math&gt;), Minimize light exposure

Expiration Date 12 months upon receiving

**Chemical Properties**

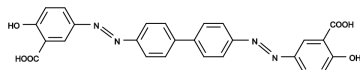
---

Appearance Solid

Molecular Weight 482.44

Soluble In DMSO

Chemical Structure

**Applications**

---

Chrysamine G is a lipophilic, bis-salicylic acid analog of Congo Red that displays both high ( $K_d = 200\text{ nM}$ ;  $B_{max} = 1.13$  moles per mole of Ab40) and low ( $K_d = 38.77\text{ }\mu\text{M}$ ;  $B_{max} = 23.10$  moles per mole of Ab40) affinity binding sites for beta-amyloid (Ab) fibrils. It can cross the blood-brain barrier and serve as a useful probe for detecting senile plaques (Ab aggregate).