

iFluor™ 488-Concanavalin A Conjugate

 Catalog number: 25580
 Unit size: 1 mg

Component	Storage	Amount
iFluor™ 488-Concanavalin A Conjugate	Freeze (< -15 °C), Minimize light exposure	1 mg

OVERVIEW

Concanavalin A (ConA) is a lectin that binds specifically to certain structures found in various sugars, glycoproteins and glycolipids. Con A is a well-known T cell mitogen that can activate the immune system, recruit lymphocytes and elicit cytokine production. In addition to its mitogenic activity, ConA can induce programmed cell death via mitochondria-mediated apoptosis and autophagy. ConA has also been reported to activate NFAT (nuclear factor of activated T cells), a family of transcription factors that are important in the development and function of the immune system, including T cell receptor (TCR) engagement. ConA is widely used in biology and biochemistry to characterize glycoproteins and other sugar-containing entities on the surface of various cells. It is also used to purify glycosylated macromolecules in lectin affinity chromatography, as well as to study immune regulation by various immune cells. ConA binds specifically α -D-mannosyl and α -D-glucosyl residues (two hexoses differing only in the alcohol on carbon 2) in terminal position of ramified structures from B-Glycans. It has 4 binding sites, corresponding to the 4 subunits. Concanavalin A (Con A) is one of the most widely used lectins in cell biology. iFluor™488-labeled Concanavalin A selectively binds to a-mannopyranosyl and a-glucopyranosyl residues and might exhibit the brightest green fluorescence.

KEY PARAMETERS

Fluorescence microscope

Excitation	FITC filter set
Emission	FITC filter set
Recommended plate	Black wall/clear bottom

PREPARATION OF STOCK SOLUTIONS

Unless otherwise noted, all unused stock solutions should be divided into single-use aliquots and stored at -20 °C after preparation. Avoid repeated freeze-thaw cycles.

iFluor™ 488-Concanavalin A Conjugate stock solution (200X)

Add 500 μ L of ddH₂O into the powder form to make 2 mg/mL stock solution.

Note The reconstituted conjugate solution can be stored at 2-8 °C for short-term storage or at -20 °C for long-term storage.

PREPARATION OF WORKING SOLUTION

iFluor™ 488-Concanavalin A Conjugate working solution (1X)

Add 5 μ L of 200X conjugate solution to 1 mL HHBS Buffer.

Note The optimized staining concentration may be different with different cell lines. The recommended starting concentration is 5-10 μ g/mL for live cells.

SAMPLE EXPERIMENTAL PROTOCOL

Warm the vial to room temperature centrifuge briefly before opening. Staining protocols vary with applications. Appropriate dilution of conjugates should be determined experimentally.

Live Cells Stain

1. Wash cells twice with a HHBS buffer.

2. Add 100 μ L iFluor™ 488-Concanavalin A working solution.
3. Incubate cells with working solution for 10-30 minutes at 37 °C.
4. Wash cells twice with HHBS buffer.
5. Image cells on a fluorescence microscope using FITC filter set.

Fixed Cells Stain

Concanavalin A conjugates can be also used to stain fixed cells.

1. Fix cells with 4% Formaldehyde in PBS.

Note For fixed cell membrane staining, it is recommended to stain without permeabilization step. Permeabilized step can after fixation will lead to intracellular compartments stain such as Golgi and Endoplasmic Reticulum (ER) structures.

2. Add 100 μ L iFluor™ 488-Concanavalin A working solution.
3. Incubate cells with Concanavalin A conjugate working solution for 10-30 minutes at room temperature.
4. Wash cells twice with HHBS buffer.
5. Image cells on a fluorescence microscope using FITC filter set.

EXAMPLE DATA ANALYSIS AND FIGURES

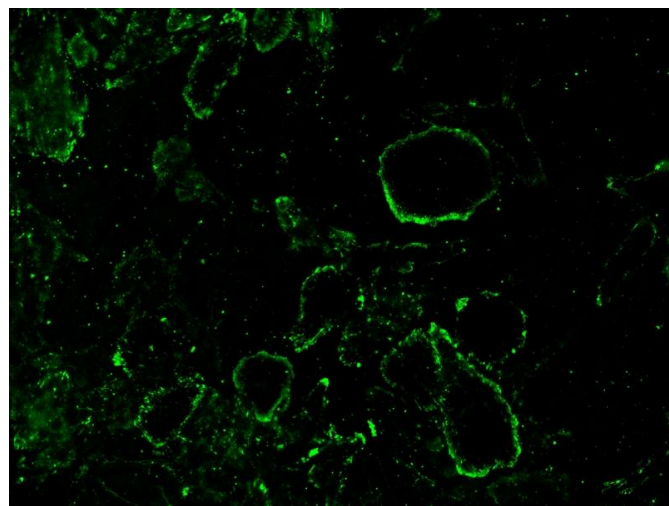


Figure 1. Live HeLa cells were stained with iFluor™ 488-Concanavalin A Conjugate Conjugate at 5 μ g/mL for 30 minutes. Image was acquired using fluorescence microscopy using FITC filter set.

DISCLAIMER

AAT Bioquest provides high-quality reagents and materials for research use only. For proper handling of potentially hazardous chemicals, please consult the Safety Data Sheet (SDS) provided for the product. Chemical analysis and/or reverse engineering of any kit or its components is strictly prohibited without

written permission from AAT Bioquest. Please call 408-733-1055 or email info@aatbio.com if you have any questions.