

PageTell™ Prestained 10 to 250 kDa Protein Ladder

 Catalog number: 60080, 60081
 Unit size: 100 ul, 4X 250 ul

Component	Storage	Amount (Cat No. 60080)	Amount (Cat No. 60081)
PageTell™ Prestained 10 to 250 kDa Protein Ladder	Freeze (< -15 °C), Minimize light exposure	100 µL	4X250 µL

OVERVIEW

PageTell™ Prestained 10 to 250 kDa Protein Ladder is a ready-to-use three-color protein standard with 13 pre-stained proteins covering a wide range of molecular weights from 10 to 250 kDa in Tris-Glycine buffer. Proteins are covalently coupled with a blue chromophore except for two reference bands (one green and one red band at 25 kDa and 75 kDa, respectively) when separated on SDS-PAGE (Tris-Glycine buffer). The ready to use format helps the users to use it directly without the need to heat, reduce or add a sample buffer prior to use. It is designed for monitoring protein separation during SDS-polyacrylamide gel electrophoresis, verification of Western transfer efficiency on membranes (nitrocellulose, PVDF, or nylon) and for approximating the size of proteins.

SAMPLE EXPERIMENTAL PROTOCOL

PageTell™ Prestained 10 to 250 kDa Protein Ladder is pre-formulated and ready to use. 5 µL per well is recommended to use for each gel.

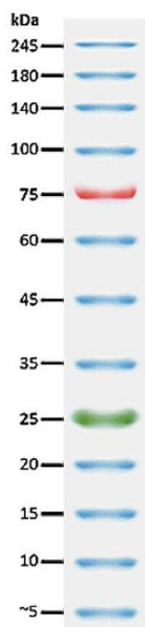
EXAMPLE DATA ANALYSIS AND FIGURES


Figure 1. PageTell™ Prestained 10 to 250 kDa Protein Ladder

DISCLAIMER

AAT Bioquest provides high-quality reagents and materials for research use only. For proper handling of potentially hazardous chemicals, please consult the Safety Data Sheet (SDS) provided for the product. Chemical analysis and/or reverse engineering of any kit or its components is strictly prohibited without written permission from AAT Bioquest. Please call 408-733-1055 or email info@aatbio.com if you have any questions.